

Conector industrial multipin 48 -pini (16A)

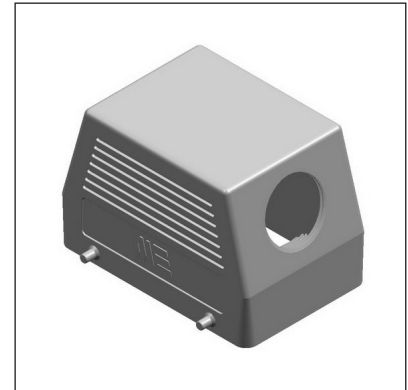
Tip/Type CIM 48

Carcasa

- 48x16A (48P+E)
- Grad de protectie IP 65
- 380-415V / 50-60 Hz
- Inel de fixare (presetupa):
PG 29

Hood

- 48x16A (48P+E)
- Degree of protection IP 65
- 380-415V / 50-60 Hz
- Fixing ring:
PG 29



Tip/Type SIM 48

Soclu

- 48x16A (48P+E)
- Grad de protectie IP 65
- 380-415V / 50-60 Hz

Plug

- 48x16A (48P+E)
- Degree of protection IP 65
- 380-415V / 50-60 Hz



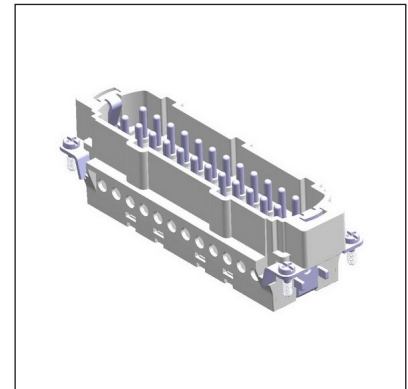
Tip/Type IT 48

Insertie tata

- 48x16A (48P+E)
- Grad de protectie IP 65
- 380-415V / 50-60 Hz

Male insert

- 48x16A (48P+E)
- Degree of protection IP 65
- 380-415V / 50-60 Hz



Tip/Type IM 48

Insertie mama

- 48x16A (48P+E)
- Grad de protectie IP 65
- 380-415V / 50-60 Hz

Female insert

- 48x16A (48P+E)
- Degree of protection IP 65
- 380-415V / 50-60 Hz

