

Teava termica standard

Cylindrical Standard Heat Pipe

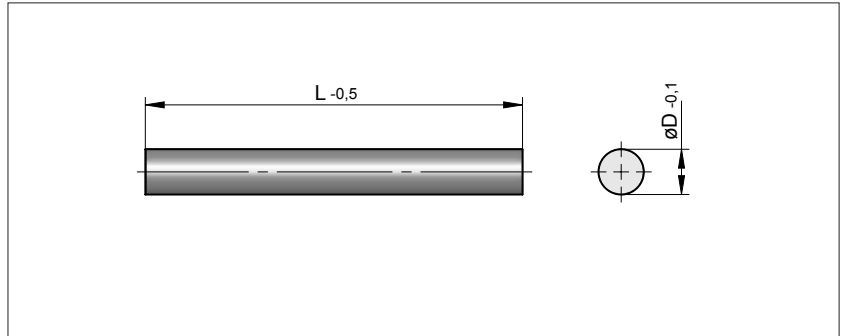
S3200/ ... (SMC ...)

Material: Cupru, placat cu staniu

Material: Copper, tin plated

Temperatura de lucru: +5 pana la +175 °C

Working temperature: +5 till +175 °C



D	L	Nr. / No.	
2,5	50	S3200/ 2,5 x 50	
	60	60	
	70	70	
	80	80	
	100	100	
	125	125	
3	50	S3200/ 3 x 50	
	60	60	
	70	70	
	80	80	
	100	100	
	125	125	
4	50	S3200/ 4 x 50	
	60	60	
	70	70	
	80	80	
	100	100	
	125	125	
5	50	S3200/ 5 x 50	
	60	60	
	70	70	
	80	80	
	100	100	
	125	125	
5	150	150	
	175	175	
	200	200	
	6	50	S3200/ 6 x 50
		60	60
		70	70
80		80	
100		100	
125		125	
8	50	S3200/ 8 x 50	
	60	60	
	70	70	
	80	80	
	100	100	
	125	125	
10	150	150	
	175	175	
	200	200	
	250	250	
	12	50	S3200/ 10 x 100
		60	60
70		70	
80		80	
100		100	
125		125	
12	150	150	
	175	175	
	200	200	
	250	250	

D	L	Nr. / No.	
6	50	S3200/ 6 x 50	
	60	60	
	70	70	
	80	80	
	100	100	
	125	125	
8	150	150	
	175	175	
	200	200	
	250	250	
	8	50	S3200/ 8 x 50
		60	60
70		70	
80		80	
100		100	
125		125	
10	150	150	
	175	175	
	200	200	
	250	250	
	10	100	S3200/ 10 x 100
		125	125
150		150	
175		175	
200		200	
250		250	
12	100	S3200/ 12 x 100	
	125	125	
	150	150	
	175	175	
	200	200	
	250	250	

Alte dimensiuni la cerere.

Other dimensions on request.