

Teava termica

S3205/ ... (ASMX ...)

Material: Cupru, placat cu staniu

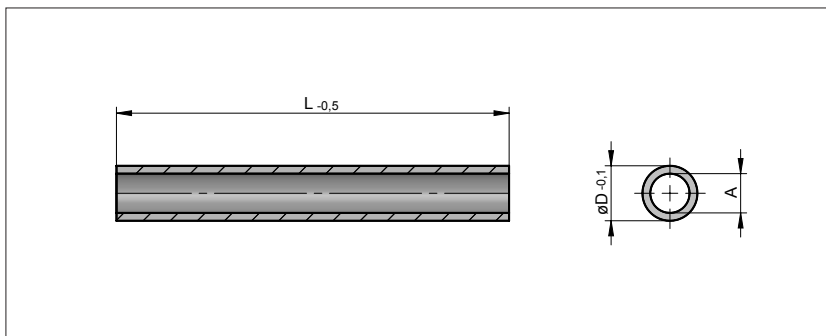
Temperatura de lucru: +5 pana la +275 °C

Urmatoarele diametre interioare **A** sunt disponibile:
1,3 / 2,3 / 4 / 5,2 / 7 mm

Cylindrical Heat Pipe

Material: Copper, tin plated

Working temperature: +5 till +275 °C

The following internal diameters **A** are available:
1,3 / 2,3 / 4 / 5,2 / 7 mm

D	L	Nr. / No.
5	50	S3205/ 5 x 50 x A
	60	60 x A
	70	70 x A
	80	80 x A
	100	100 x A
	125	125 x A
	150	150 x A
	175	175 x A
	200	200 x A
6	50	S3205/ 6 x 50 x A
	60	60 x A
	70	70 x A
	80	80 x A
	100	100 x A
	125	125 x A
	150	150 x A
	175	175 x A
	200	200 x A
8	50	S3205/ 8 x 50 x A
	60	60 x A

Alte dimensiuni la cerere.

Va rugam sa anexati dimensiunea dorita
pentru **A** la numarul de comanda.

D	L	Nr. / No.
8	70	S3205/ 8 x 70 x A
	80	80 x A
	100	100 x A
	125	125 x A
	150	150 x A
	175	175 x A
	200	200 x A
	250	250 x A
	10	100
125		125 x A
150		150 x A
175		175 x A
200		200 x A
12	250	250 x A
	100	S3205/ 12 x 100 x A
	125	125 x A
	150	150 x A
	175	175 x A
	200	200 x A
250	250	250 x A

Other dimensions on request.

Please attach the desired dimension
for **A** to the order number.