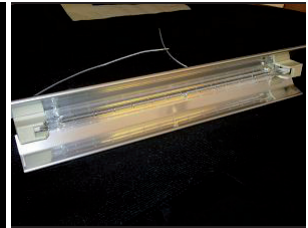
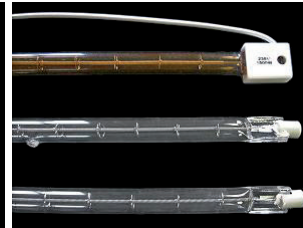
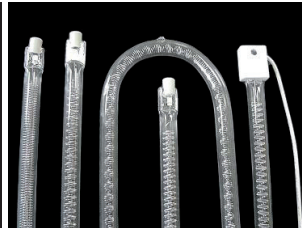
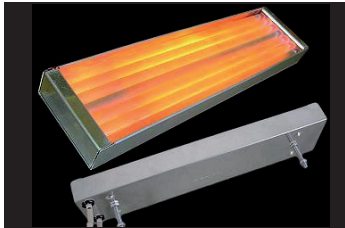


## Radiatoare infrarosu cu tuburi de cuarț

### INFO



#### Descriere:

Radiatoarele infrarosu cu tuburi de cuarț sunt elemente de incalzire ce ofera radiatii in lungimile de unda medii si scurte. Sunt folosite in diverse aplicatii industriale unde sunt necesare actionari rapide de incalzire, incluzand sisteme cu zone controlate de incalzire.

## Radiator infrarosu cu tuburi de cuarț

### Tip/Type FQE

#### Caracteristici standard:

- Sarma rezistenta din fier-crom aluminiu
- Tensiunea de alimentare: 230 Volt standard (alte tensiuni la cerere)
- Intervalul de lungimi de unda: 1.5-8 microni
- Durata medie de viata: 5.000 - 10.000 ore
- Distanța de radiere recomandata este cuprinsa intre: 100 mm pana la 200 mm
- Lungimea firelor de alimentare este de 100 mm, izolate cu inele ceramice

## Quartz infrared heating elements

### INFO

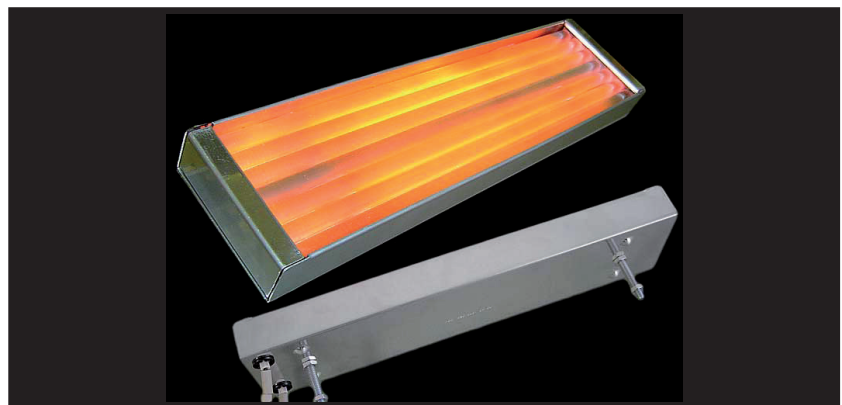
#### Description:

Quartz infrared heating elements provide short and medium wave infrared radiation. They are favoured in industrial application, where rapid heater response is necessary, including systems, where controlled heating is required.

## Quartz infrared heating element

#### Standard features:

- Iron-chrome aluminium resistance wire
- Heater Voltage: 230 Volts standard (other voltages available on request)
- Useful wavelength range: 1.5-8 microns
- Average Operating Life: 5,000 - 10,000 hours
- Recommended radiation distance from heater is: 100 mm to 200 mm
- Supplied with 100 mm power leads, ceramic beaded



Nr. / No.
FQE

Puterea Wattage	W	150	250	400	500	650	750	1000
Temperatura de suprafata: Mean surface temperature:	°C	343	438	542	593	664	690	772
Densitatea max. de putere: Max power density:	kW/m <sup>2</sup>	9	15	24	30	39	45	60
Greutate: Weight:	g	~ 327						
Dimensiuni: Dimensions:	mm	247 x 62.5 x 22						

## Radiator infrarosu cu tuburi de cuarț

## Quartz infrared heating element

### Tip/Type HQE

#### Caracteristici standard:

- Sarma rezistenta din fier-crom aluminiu
- Tensiunea de alimentare: 230 Volt standard (alte tensiuni la cerere)
- Intervalul de lungimi de unda: 1.5-8 microni
- Durata medie de viata: 5.000 - 10.000 ore
- Distanța de radiere recomandata este cuprinsa intre: 100 mm pana la 200 mm
- Lungimea firelor de alimentare este de 100 mm, izolate cu inele ceramice

#### Standard features:

- Iron-chrome aluminium resistance wire
- Heater Voltage: 230 Volts standard (other voltages available on request)
- Useful wavelength range: 1.5-8 microns
- Average Operating Life: 5,000 - 10,000 hours
- Recommended radiation distance from heater is: 100 mm to 200 mm
- Supplied with 100 mm power leads, ceramic beaded



Nr. / No.
HQE

Puterea Wattage	W	150	250	400	500
Temperatura de suprafata: Mean surface temperature:	°C	470	593	720	772
Densitatea max. de putere: Max power density:	kW/m <sup>2</sup>	9	15	24	30
Greutate: Weight:	g	~ 210			
Dimensiuni: Dimensions:	mm	124 x 62.5 x 22			

## Radiator infrarosu cu tuburi de cuarț

## Quartz infrared heating element

### Tip/Type QQE

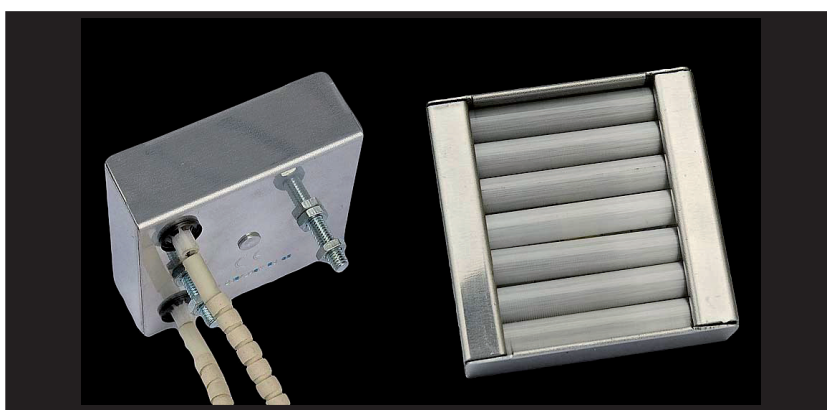
#### Caracteristici standard:

- Sarma rezistentă din fier-crom aluminiu
- Tensiunea de alimentare: 230 Volt standard (alte tensiuni la cerere)
- Intervalul de lungimi de undă: 1.5-8 micrometri
- Durata medie de viață: 5.000 - 10.000 ore
- Distanța de radiație recomandată este cuprinsă între: 100 mm până la 200 mm
- Lungimea firelor de alimentare este de 100 mm, izolate cu inele ceramice

#### Standard features:

- Iron-chrome aluminium resistance wire
- Heater Voltage: 230 Volts standard (other voltages available on request)
- Useful wavelength range: 1.5-8 microns
- Average Operating Life: 5,000 - 10,000 hours
- Recommended radiation distance from heater is: 100 mm to 200 mm
- Supplied with 100 mm power leads, ceramic beaded

Nr. / No.
QQE



Puterea Wattage	W	150	250
Temperatura de suprafață: Mean surface temperature:	°C	635	772
Densitatea max. de putere: Max power density:	kW/m <sup>2</sup>	18	30
Greutate: Weight:	g	~ 136	
Dimensiuni: Dimensions:	mm	62.5 x 62.5 x 22	

## Radiator infrarosu cu tuburi de cuarț

## Quartz infrared heating element

### Tip/Type SQE

#### Caracteristici standard:

- Sarma rezistenta din fier-crom aluminiu
- Tensiunea de alimentare: 230 Volt standard (alte tensiuni la cerere)
- Intervalul de lungimi de unda: 1.5-8 micrometri
- Durata medie de viata: 5.000 - 10.000 ore
- Distanța de radiere recomandată este cuprinsă între: 100 mm până la 200 mm
- Lungimea firelor de alimentare este de 100 mm, izolate cu inele ceramice

#### Standard features:

- Iron-chrome aluminium resistance wire
- Heater Voltage: 230 Volts standard (other voltages available on request)
- Useful wavelength range: 1.5-8 microns
- Average Operating Life: 5,000 - 10,000 hours
- Recommended radiation distance from heater is: 100 mm to 200 mm
- Supplied with 100 mm power leads, ceramic beaded

Nr. / No.
SQE



Puterea Wattage	W	150	250	400	500	650	750	1000
Temperatura de suprafață: Mean surface temperature:	°C	343	438	542	593	664	690	772
Densitatea max. de putere: Max power density:	kW/m <sup>2</sup>	9	15	24	30	39	45	60
Greutate: Weight:	g	~ 386						
Dimensiuni: Dimensions:	mm	124 x 124 x 22						